

BANNER 8 Navigation Menu

Go To... Welcome, Rebecca Snook.

Products: [Menu](#) | [Site Map](#) | [Help Center](#)

- My Banner
- Banner
 - Student [*STUDENT]
 - Course Catalog [*CATALOG]
 - Class Schedule [*SCHEDULE]
 - Schedule [SSASECT]
 - Schedule Detail [SSADETL]
 - Schedule Restrictions [SSARRES]
 - Schedule Prerequisite and Test Score Restrictions [SSAPREQ]
 - Schedule Labor Distribution [SSACLBD]
 - Section Comment [SSATEXT]
 - Section Web Controls [SSAWSEC]
 - Schedule Section Query [SSASECQ]
 - Reserved Seats Inquiry [SSIRESV]
 - Schedule Override [SSAOVRR]
 - Schedule Processing Rules [SSARULE]
 - Section Syllabus [SSASYLB]
 - Schedule Cross List [*SCHEDXLST]

My Links

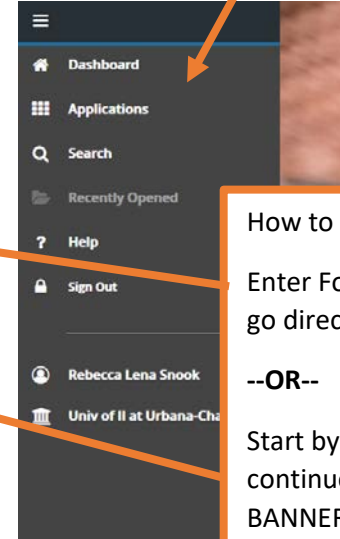
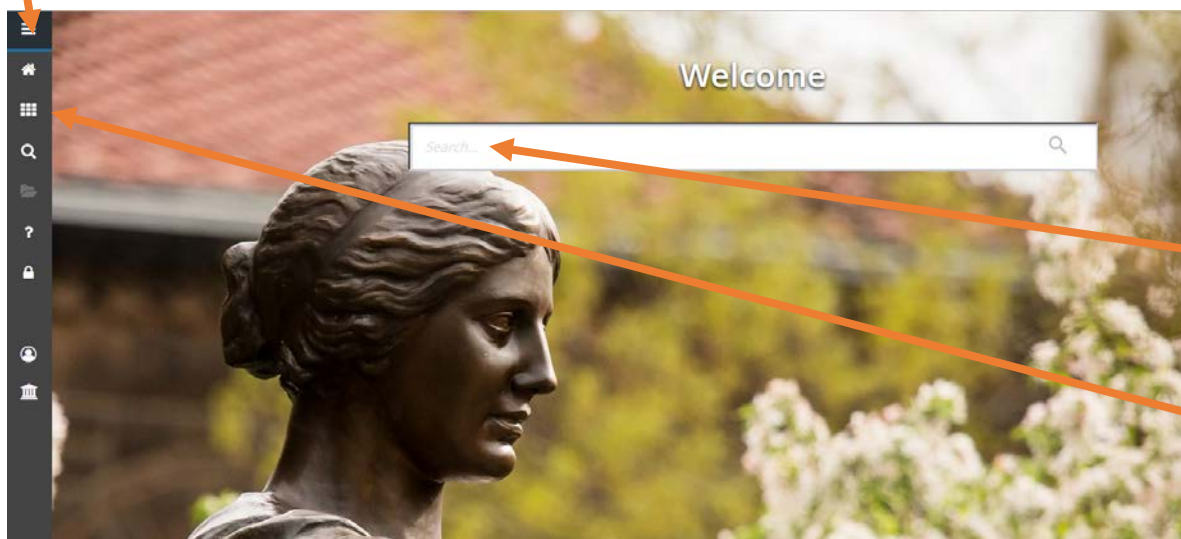
- [Check Banner Messages](#)
- [UIC](#)
- [UIS](#)
- [Urbana](#)
- [Personal Link 4](#)
- [Personal Link 5](#)
- [Personal Link 6](#)

My Institution

UNIVERSITY OF ILLINOIS SYSTEM
URBANA-CHAMPAIGN • CHICAGO • SPRINGFIELD

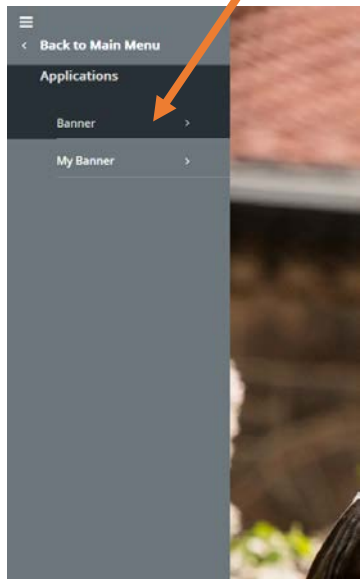
Banner Broadcast Messages

Banner 9 Navigation Bar – click on 3 lines in top left corner to view what the icons mean.

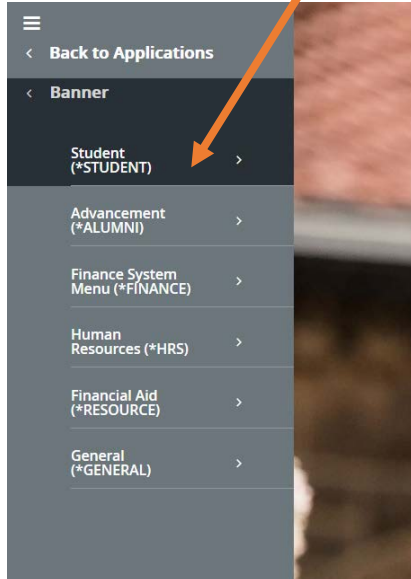


How to open a Banner Form
Enter Form name in search box and hit enter to go directly to form.
--OR--
Start by clicking on APPLICATION, then continue opening menus by clicking on BANNER, STUDENT, CLASS SCHEDULE. See below for an example of how the menu changes with each click to get to SSASECT.

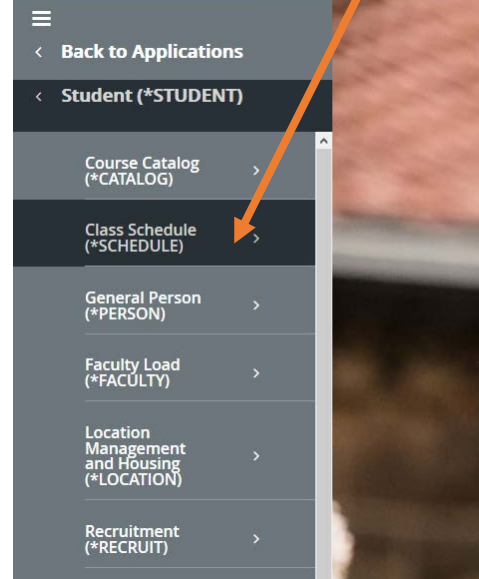
Click on BANNER



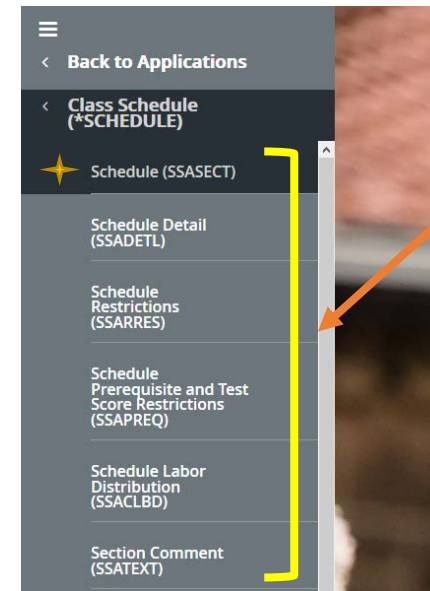
Click on STUDENT



Click on CLASS SCHEDULE



Now you will see the entire Class Schedule menu which includes SSASECT



To go to related forms from your current form in BANNER 8, you would use the OPTIONS drop down menu. For BANNER 9, it is now called the RELATED menu.

